

Technical data sheet

Mounting bracket

Part no.: 50117257

BT D21M

Contents

- Technical data
- Dimensioned drawings
- Accessories



Figure can vary

Technical data

Basic data

Suitable for 318 series sensors

Mechanical data

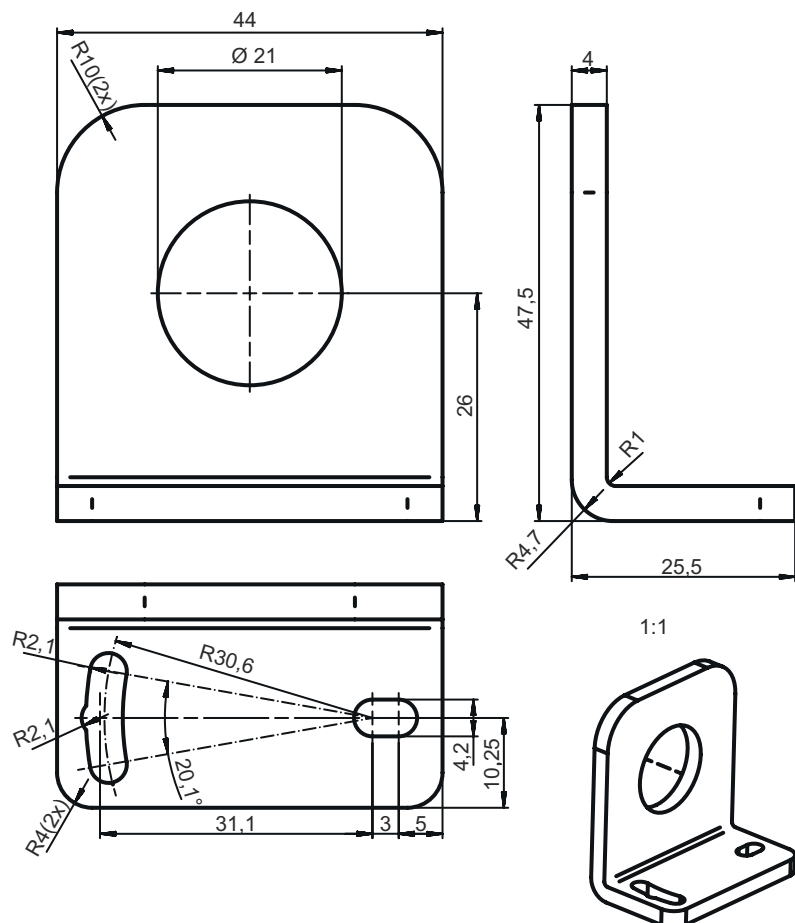
Inner diameter 21 mm
 Standard designation, metal mounting device Steel, galvanized
 Design of mounting device Angle, L-shape
 Type of fastening, at system Through-hole mounting
 Type of fastening, at device Screw type
 Type of mounting device Adjustable
 Mounting device material Metal
 ITEM-compatible No

Classification

Customs tariff number 73182900
 eCl@ss 5.1.4 27279202
 eCl@ss 8.0 27279202
 eCl@ss 9.0 27273701
 eCl@ss 10.0 27273701
 eCl@ss 11.0 27273701
 ETIM 5.0 EC002498
 ETIM 6.0 EC003015
 ETIM 7.0 EC003015

Dimensioned drawings

All dimensions in millimeters



Accessories

Mounting technology - Other

	Part no.	Designation	Article	Description
	50121904	BT318B-OM	Fastening	Design of mounting device: Mounting clamp Fastening, at system: Through-hole mounting Mounting bracket, at device: Screw type Type of mounting device: Swiveling, Adjustable, Turning Material: Plastic

Note



A list with all available accessories can be found on the Leuze website in the Download tab of the article detailed page.